

Working in Spittal, for Spittal

THE POINT



LOWER SPITTAL COUNCILLORS

Berwick Town Councillors have been doing 'Walks Around' the various Wards under its umbrella.

The idea is to get a visual look at what could be undertaken in each Ward to improve its environment for those that live in it. It was the turn of Lower Spittal on Friday 16th June.

We started in the Sandstell Road car park where NCC have repainted the parking bays and disability bays added. It was also envisaged that NCC will be installing charging points located there for electric cars, but apparently this is not going ahead.

Also suggested was that a portion of the grass to the west of the footpath path running from the Point car park to the start of St Helens Terrace could be left to

become wild, and the berm in the play area next to the Prom, which helps to keep the sand at bay, could be filled with coastal loving plants as this would help to stabilize it. We will also be getting two additional 3 tier planters that will be sited next to the existing one on the Prom opposite Tribeca Hair Design. It is hoped that this will help in stopping cars from parking on the prom here.

It was also agreed that the Town Council should investigate taking over the ownership of Sea Field Park from NCC, the current owners. This would mean requesting an 'Asset Transfer', which will take some time to go through the various processes.

There were other suggestions expressed on our 'Walk Around', most of these related to issues that NCC needs to address.

Cllrs. Janice & Mike.

GARDENING GROUP

Summer is here, at last, and it's lovely to see the sunshine but for the gardeners it's a constant worry about watering the plants. There is such a large area to cover any help is very much appreciated. Watering the flower beds along Main Street is especially important. We would be very grateful if any help was available locally. A big thank you to Sylvia Johnson for filling the water butts in Seafield Park and to St John's Church for allowing access to their water supply.

Preparations for **TEA IN THE PARK** are well under way. Keep a note in your diary for Sunday 16th July. There will be the usual stalls; tombolas, raffle, face painting to name but a few and, of course, the refreshments table with all the lovely home bakes. There will be live music and plenty of entertainment for the children. All we need is good weather and you our loyal supporters. If the weather does let us down the event will be moved to the Community Centre hall.

We are planning to hold the **FLORAL COMPETITION** again this year. The judges will be out around the village in July and the results will be posted in the shop.

I hope you have a lovely Summer and enjoy all the lovely floral areas around the village.

I would like to thank the lovely lady who has once again planted up the 3 tier planter on the Prom. It looks beautiful.

Mau Watkins, Chair, Spittal Gardening Group 07748 076527

SPITTAL MINI MUSEUM

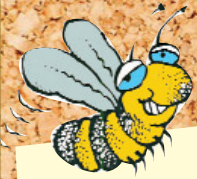
This is being installed in the Aidan Room at The Community Centre. Display cupboards have been bought from the Salvation Army shop with profit from the sale of the Secret Spittal Books.

Do you have something Spittal related you would like to donate? Items could be something made or used in one of the old factories, in the home, relating to fishing, or, beach finds like bottles and clay pipes. We are open to all your suggestions, but there is limited space, so, if there are several items the same we might not be able to accommodate them all.

Please contact me if you would like to join the Heritage Group or you have artefacts to donate.

*Raine, Heritage Group,
01289 298369.*

WHAT'S ON



TEA IN THE PARK July 16th from 2pm to 5pm

There will be a sumptuous tea, raffle, tombola and side stalls with musical entertainment from Duke.

So, please do come and support this Gardening Group fundraiser.



FREE TAI CHI

At Spittal's Seafield Park, Sea Road, weather permitting. Friday mornings, 10.25am registration and the class starts at 10.30 am.

Ideal for complete beginners as well as the more experienced. Wear casual clothes and trainers.

Contact Pete Barnes, if you require further information.

Email: berwicktaichi@gmail.com

Come and join the Knit and Natter Group



In Spittal Community Centre
On Wednesdays 2-4pm
£3 (includes tea and biscuits)

ALL WELCOME

SPITTAL MOSAIC SIGN

Come along to the Tea In The Park and add a piece of beach find pottery or glass to the mosaic. We have pieces, or, you can bring your own but they will need to be flat, unchipped pieces and smooth round the edges.



The summer inserts for 14 boards along the trail, from Coronation Park in Berwick to the Spittal

Cliffs, are now installed until 21st September when they will be replaced with the Autumn inserts. See the website for the route, Explorer Quizzes for the kids, audios, wildlife identification pages, geology trail and travel information.

www.tweedandcoast.org



Sunday 9th July

SEA SUNDAY

12 noon - 4pm

Refreshments, Stalls,
Competitions, Singing,
Water Safety, Bouncy Castle.....

In the Garden
St John's Church, Main Street, Spittal



NEW BUSINESS PREMISES - 'THE POTTERY'

This building has recently been converted into workshops and office space by Spittal builders, R J Eden and Sons.

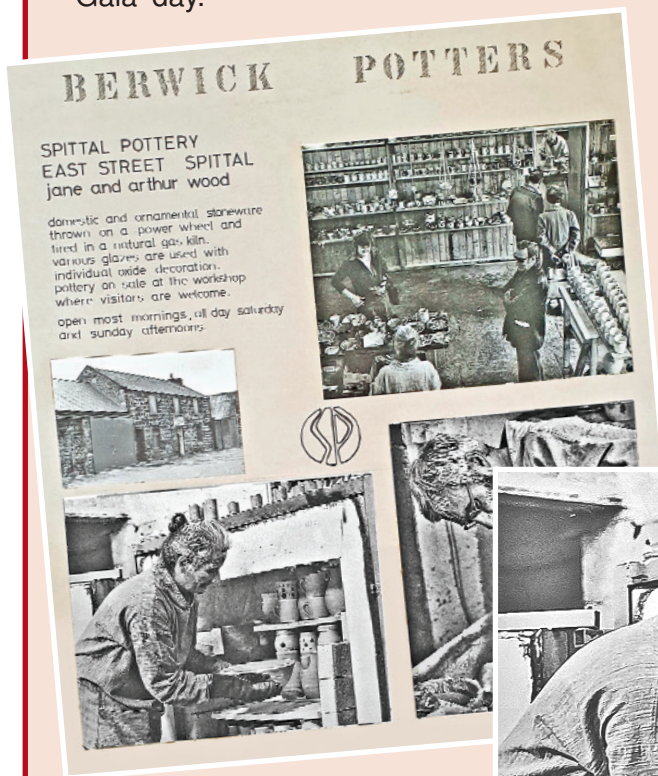
The name of the building makes reference to its use from 1977 to 1983 as the family business of 'Spittal Pottery' run by Jane and Arthur Wood, who were very much part of the Spittal community. They lived in Eden House, Main Street, that had originally been built by 'Lucky' Martha White as her own home.

The pottery was opened in East Street in the old offices of Fison's fertilizer Enfield Works, which prior to that belonged to McCreaths. 'Spittal Pottery' was relocated away from here in 1983 to a house in Castle Terrace, creating a smaller-scale set up for throwing and firing pots adjoining the house, but continuing the 'Spittal Pottery' name.

Mugs handmade by the pottery were awarded annually to prize winners at 'Spittal Gala' day.

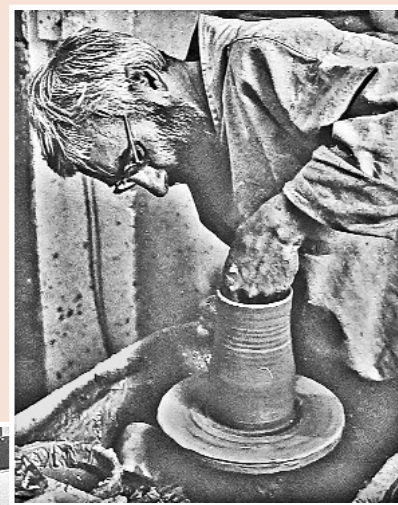


Above: 2023
Below: c1977



A promotional display board

Jane and Arthur Wood



Kitty, daughter of Jane and Arthur Wood kindly shared this information about her parents' pottery, and we added some extra historical bits. If you have something you think other villagers would find interesting, please let us know by contacting the Secretary whose email and phone number is at the end of this newsletter,

LACK OF WATER IN SPITTAL

There used to be several streams running down the hill and through the village. Since these have been put underground wildlife is dependent on us to provide water.

The RSPB website has lots of ideas about water containers which they suggest should be no more than 2 inches deep or it will need large stones in the bottom so smaller birds can safely bath. They also comment that a few copper coins in the water will help stop algae growing. The container needs to be positioned away from cover that a cat could hide in and not be in direct sun midday or afternoon. Replace the water daily and clean the container once a week to prevent the spread of disease.

p.s. Don't forget a shallow dish of water on the ground for hedgehogs.

BIRDBATH VOLUNTEERS NEEDED

St. John's Church nature garden has a birdbath that is so popular with the birds that it needs filling up twice a day in dry weather.

Would you like to volunteer to be part of a rota to clean and fill the bath? If so, please contact Mary Higginson on mobile: 0758 4676 525 or email: maryhigginson@googlemail.com



NEWS FROM THE TRUST

We are continuing to get enquiries about hiring parts of the Community Centre. We were glad to hear that the Guides are coming back into the hall after the summer holidays. Since then, Spittal Cubs have taken up residence in the hall once again. They have been using the hall for 100yrs.

Now that things are beginning to settle down, we will have to start looking into some major fund raising. There are two strands of funding we will be looking for. First and foremost, will be our need to raise enough to enable us to buy the entire building. This is a condition of our lease. If we are not showing enough progress on this, the owners of the building will be within their rights to terminate the lease. Raising the funding could probably take us up to 18 months to achieve.

Running alongside the major fundraising will be the need to raise funding to make improvements within the building. The initial aim will be to seek funding for secondary glazing to prevent heat loss through the single glazing, which is throughout the building. This will be a tremendous help in reducing our

energy bills. If you have any ideas for raising this funding, we would be pleased to hear from you.

Although we are beginning to get more groups to hire out the various rooms within the building, it feels like we are just becoming landlords. The definition of a Community Centre is simple enough: *'a place where people from a particular neighbourhood can meet for social events, educational classes, or recreational activities'*. We are providing this, but at the moment it is just for groups, not individuals.

One way of starting to do this is to open a drop in café. It may not be to the standard of the bigger chains, Costa Coffee and Café Nero etc, but it will be somewhere for an individual to walk into and know that this is a place where they can sit with a coffee, read a book, and enjoy just being in there. It is something we are looking into and hope to start in the near future, perhaps for a couple of days a week to start with. It will have to be run by volunteers to start with, if this is something you might like to help with, then please let us know.

Mike Greener, Secretary SIT. 07752 403409

NEED A VENUE?

Book the
SPITTAL COMMUNITY CENTRE

Contact SIT

To avoid disappointment, please note that the deadline for inclusion in the August 1st edition is July 18th.

SIT Contacts:

Chair: Mau Watkins – 01289 308813
mrswatkins2@hotmail.co.uk

Secretary: Mike Greener – 07752 403409
mikegreener84@gmail.com

www.spittal.org.uk

Follow us on

